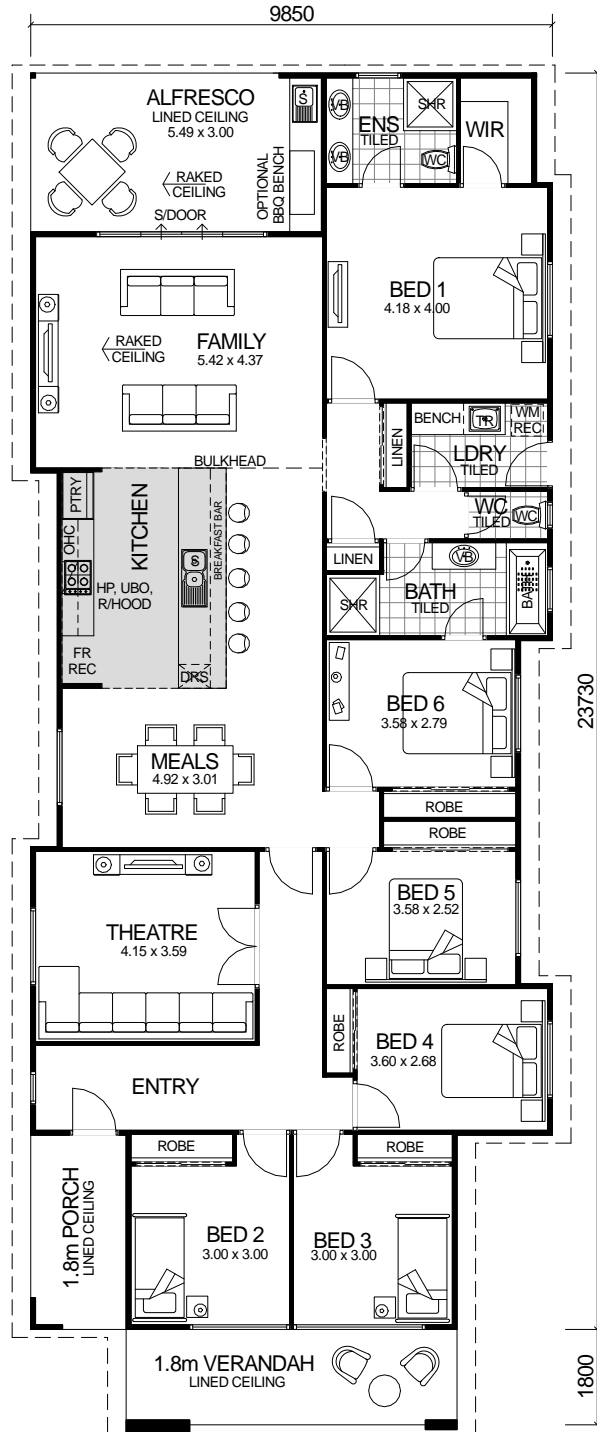


METRO SERIES



6 BEDROOM x 2 BATHROOM
PLUS THEATRE

"THE COASTAL 6x2"

TOTAL HOMES © COPYRIGHT

NARROW BLOCK
COMPATIBLE

OPTIONAL DOUBLE
GARAGE AVAILABLE TO
FRONT OR REAR OF
HOME: 36m²

OVERALL SIZE:
Width 9.85m
Length 25.71m

AREA	
HOUSE:	195.11m ²
VERANDAH:	11.25m ²
PORCH:	6.61m ²
ALFRSCO:	16.47m ²
TOTAL:	229.44m ²
TOTAL WITH OPTIONAL GARAGE:	265.44m ²

DESIGN FEATURES

- ARCHITECTURALLY DESIGNED MODERN IN VOGUE FRONT ELEVATION.
- SMART GLASS INCLUDED TO ALL ALUMINIUM WINDOWS AND DOORS IN CLIMATE ZONES 4 & 5.
- LARGE GALLEY KITCHEN WITH BREAKFAST BAR, AND STAINLESS STEEL APPLIANCES.
- LARGE SHOWER RECESS TO BATHROOM.
- HIS & HERS VANITY BASINS TO ENSUITE.
- LARGE ALFRESCO & VERANDAH INCLUDED.
- HIGH RAKING CEILING TO FAMILY.
- 2.7m CEILING HEIGHT.